



📍 7 Magpie Mews, Devizes, Wiltshire, SN10 1NR

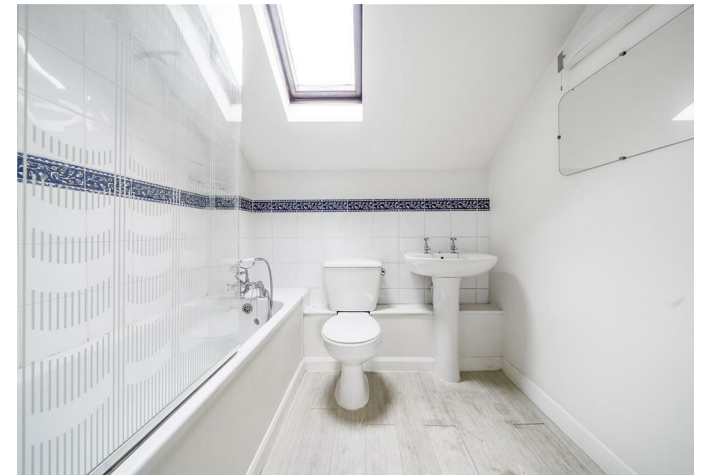
🏠 Guide Price £130,000

A well presented 1 Bedroom Mews style property situated in the heart of Devizes Town Centre and close to all the great amenities it has to offer. A fantastic opportunity for rental income or first time buyers, offered with no onward chain.

- Well Presented Mews Property
- Recently Re-fitted Kitchen
- Fantastic Town Centre Location
- No Onward Chain
- Modern Electric Heaters
- Good Condition Throughout
- Rental Income Opportunity

🏡 Freehold

🏠 EPC Rating E



Located just off the historical Bridewell Street, just a stones throw from Devizes town centre, 7 Magpie Mews is a great opportunity for first time or investment buyers alike.

Offered with no onward chain and in good condition throughout, this conveniently located property is entered through a quiet alleyway just off Bridewell Street with it's many historical listed buildings. Being just a short, easy stroll to the bustling market square of Devizes, with it's weekly market on a Thursday, you could not be any closer to be able to immerse yourself in market town life.

Walking in through the front door, you are greeted by the open plan, light and airy downstairs accommodation including lounge and kitchen, within the kitchen, you have electric oven and hob with various white goods that are negotiable. The current vendor has also added some extra storage which spans under the stairs and gives you great useable space.

To the first floor of the property is the spacious double bedroom, complete with en-suite, with a shower over the bath.

Book a viewing with us today to avoid disappointment.

Situation

Conveniently located in the town, the historical Bridewell Street has a wide selection of period and listed homes. The property itself sits within a short distance of the town centre and the recently renovated Hillworth Park. A historic market town, Devizes has many amenities including town centre shopping, a leisure centre, schools for all ages, various supermarkets, a variety of shops, cinema, theatre and thriving weekly market. The historic Kennet & Avon Canal runs through the town providing fishing and walking facilities. The major centres of Bath, Salisbury, Swindon, Marlborough and Chippenham are all within a 30 mile radius.

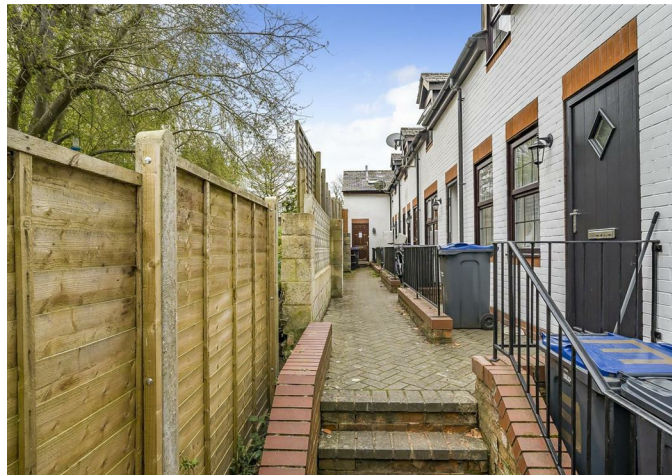
Property Information

Tenure: Freehold

Council Tax : Band A

Services: Mains water and drainage are connected at the property. Electric heating.

Agents note: The property is Grade II Listed and situated in a conservation area.

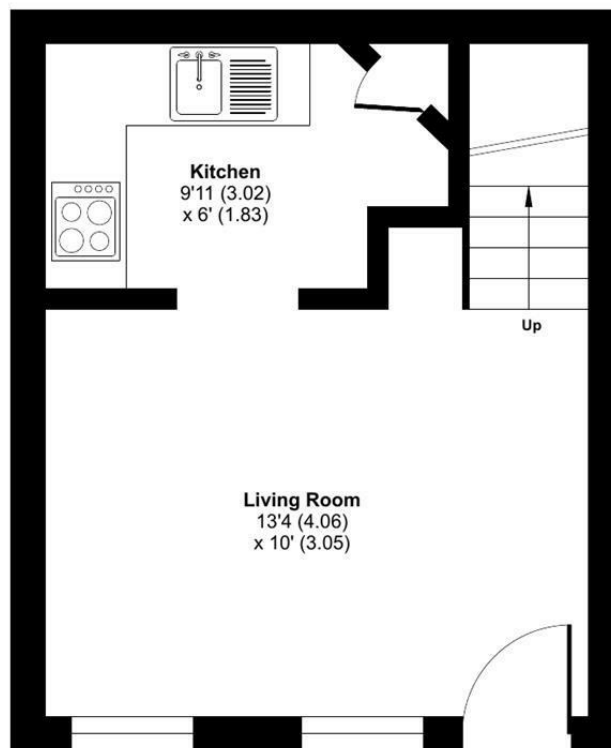




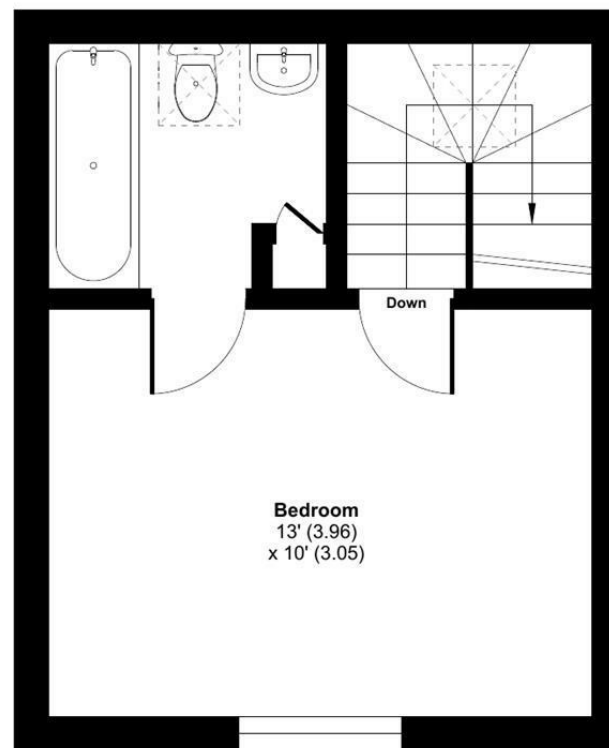
Magpie Mews, Devizes, SN10

Approximate Area = 440 sq ft / 40.8 sq m

For identification only - Not to scale



GROUND FLOOR



FIRST FLOOR



Floor plan produced in accordance with RICS Property Measurement Standards incorporating International Property Measurement Standards (IPMS2 Residential). © nitchecom 2023. Produced for Strakers. REF: 959915

Disclaimer: These particulars, whilst believed to be accurate are set out as a general outline only for guidance and do not constitute any part of an offer or contract. Intending purchasers should not rely on them as statements of representation of fact, but must satisfy themselves by inspection or otherwise as to their accuracy. No person in this firm's employment has the authority to make or give any representation or warranty in respect of the property. All measurements and distances are approximate only. Your home is at risk if you do not keep up repayments on a mortgage or other loan secured on it.